



wwPDB X-ray Structure Validation Summary Report ⓘ

Mar 18, 2026 – 05:27 AM UTC

PDB ID : 4FA4 / pdb_00004fa4
Title : Crystal Structure of WT MauG in Complex with Pre-Methylamine Dehydrogenase Aged 10 Days
Authors : Yukl, E.T.; Wilmot, C.M.
Deposited on : 2012-05-21
Resolution : 2.14 Å(reported)

This is a wwPDB X-ray Structure Validation Summary Report for a publicly released PDB entry.

We welcome your comments at validation@mail.wwpdb.org

A user guide is available at

<https://www.wwpdb.org/validation/2017/XrayValidationReportHelp>

with specific help available everywhere you see the ⓘ symbol.

The types of validation reports are described at

<http://www.wwpdb.org/validation/2017/FAQs#types>.

The following versions of software and data (see [references ⓘ](#)) were used in the production of this report:

MolProbity	:	4-5-2 with Phenix2.0
Mogul	:	2022.3.0, CSD as543be (2022)
Xtriage (Phenix)	:	2.0
EDS	:	3.0
Buster-report	:	wwPDB partial adaption of 1.1.7 (2018)
Percentile statistics	:	20250101.v01 (using entries in the PDB archive January 1st 2025)
CCP4	:	9.0.010 (Gargrove)
Density-Fitness	:	1.0.12
Ideal geometry (proteins)	:	Engh & Huber (2001)
Ideal geometry (DNA, RNA)	:	Parkinson et al. (1996)
Validation Pipeline (wwPDB-VP)	:	2.49

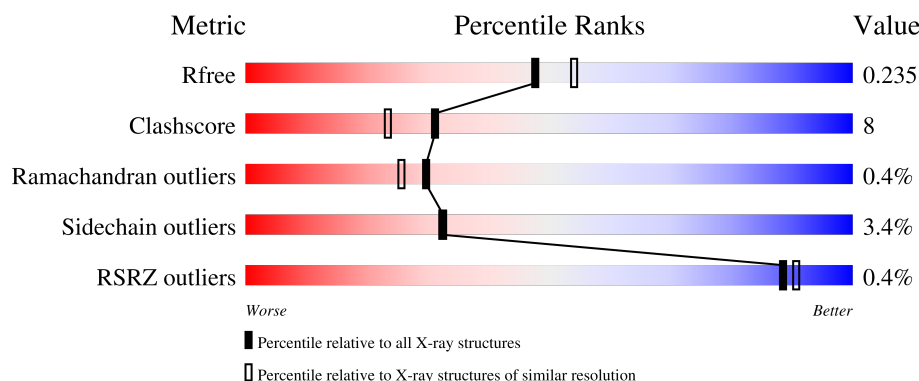
1 Overall quality at a glance

The following experimental techniques were used to determine the structure:

X-RAY DIFFRACTION

The reported resolution of this entry is 2.14 Å.

Percentile scores (ranging between 0-100) for global validation metrics of the entry are shown in the following graphic. The table shows the number of entries on which the scores are based.



Metric	Whole archive (#Entries)	Similar resolution (#Entries, resolution range(Å))
R_{free}	180053	3689 (2.16-2.12)
Clashscore	190562	3812 (2.16-2.12)
Ramachandran outliers	187476	3773 (2.16-2.12)
Sidechain outliers	187428	3772 (2.16-2.12)
RSRZ outliers	180081	3691 (2.16-2.12)

The table below summarises the geometric issues observed across the polymeric chains and their fit to the electron density. The red, orange, yellow and green segments of the lower bar indicate the fraction of residues that contain outliers for ≥ 3 , 2, 1 and 0 types of geometric quality criteria respectively. A grey segment represents the fraction of residues that are not modelled. The numeric value for each fraction is indicated below the corresponding segment, with a dot representing fractions $\leq 5\%$. The upper red bar (where present) indicates the fraction of residues that have poor fit to the electron density. The numeric value is given above the bar.

Mol	Chain	Length	Quality of chain
1	A	373	<div> <div>%</div> <div> <div></div> <div>72%</div> <div>22%</div> <div>• 5%</div> </div> </div>
1	B	373	<div> <div>%</div> <div> <div></div> <div>81%</div> <div>14%</div> <div>• •</div> </div> </div>
2	C	137	<div> <div>%</div> <div> <div></div> <div>70%</div> <div>23%</div> <div>• •</div> </div> </div>
2	E	137	<div> <div>%</div> <div> <div></div> <div>72%</div> <div>19%</div> <div>• 8%</div> </div> </div>
3	D	385	<div> <div></div> <div> <div>78%</div> <div>18%</div> <div>• •</div> </div> </div>

Continued on next page...

Continued from previous page...

Mol	Chain	Length	Quality of chain
3	F	385	<div><div></div><div>81%</div><div>15%</div><div>..</div></div>

2 Entry composition [i](#)

There are 11 unique types of molecules in this entry. The entry contains 14775 atoms, of which 0 are hydrogens and 0 are deuteriums.

In the tables below, the ZeroOcc column contains the number of atoms modelled with zero occupancy, the AltConf column contains the number of residues with at least one atom in alternate conformation and the Trace column contains the number of residues modelled with at most 2 atoms.

- Molecule 1 is a protein called Methylamine utilization protein MauG.

Mol	Chain	Residues	Atoms					ZeroOcc	AltConf	Trace
1	A	354	Total	C	N	O	S	0	7	0
			2813	1752	514	536	11			
1	B	359	Total	C	N	O	S	0	1	0
			2781	1733	502	535	11			

There are 12 discrepancies between the modelled and reference sequences:

Chain	Residue	Modelled	Actual	Comment	Reference
A	368	HIS	-	expression tag	UNP Q51658
A	369	HIS	-	expression tag	UNP Q51658
A	370	HIS	-	expression tag	UNP Q51658
A	371	HIS	-	expression tag	UNP Q51658
A	372	HIS	-	expression tag	UNP Q51658
A	373	HIS	-	expression tag	UNP Q51658
B	368	HIS	-	expression tag	UNP Q51658
B	369	HIS	-	expression tag	UNP Q51658
B	370	HIS	-	expression tag	UNP Q51658
B	371	HIS	-	expression tag	UNP Q51658
B	372	HIS	-	expression tag	UNP Q51658
B	373	HIS	-	expression tag	UNP Q51658

- Molecule 2 is a protein called Methylamine dehydrogenase light chain.

Mol	Chain	Residues	Atoms					ZeroOcc	AltConf	Trace
2	C	131	Total	C	N	O	S	0	1	0
			1017	628	179	196	14			
2	E	126	Total	C	N	O	S	0	3	0
			973	601	163	194	15			

There are 12 discrepancies between the modelled and reference sequences:

Chain	Residue	Modelled	Actual	Comment	Reference
C	132	HIS	-	expression tag	UNP P22619
C	133	HIS	-	expression tag	UNP P22619
C	134	HIS	-	expression tag	UNP P22619
C	135	HIS	-	expression tag	UNP P22619
C	136	HIS	-	expression tag	UNP P22619
C	137	HIS	-	expression tag	UNP P22619
E	132	HIS	-	expression tag	UNP P22619
E	133	HIS	-	expression tag	UNP P22619
E	134	HIS	-	expression tag	UNP P22619
E	135	HIS	-	expression tag	UNP P22619
E	136	HIS	-	expression tag	UNP P22619
E	137	HIS	-	expression tag	UNP P22619

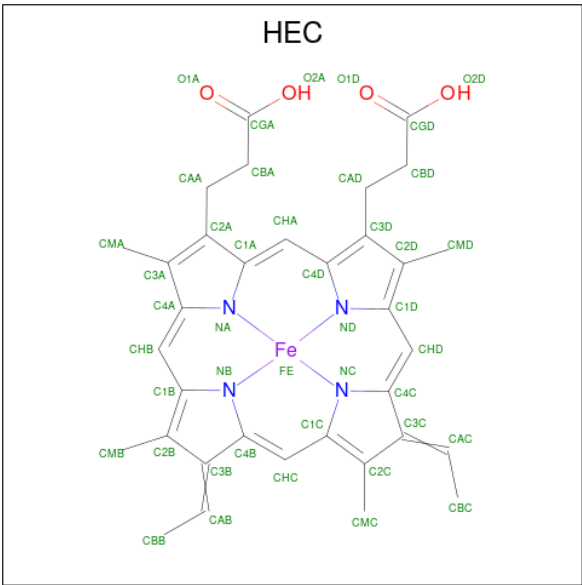
- Molecule 3 is a protein called Methylamine dehydrogenase heavy chain.

Mol	Chain	Residues	Atoms					ZeroOcc	AltConf	Trace
3	D	376	Total	C	N	O	S	0	5	0
			2959	1874	506	570	9			
3	F	376	Total	C	N	O	S	0	4	0
			2957	1872	511	565	9			

- Molecule 4 is CALCIUM ION (CCD ID: CA) (formula: Ca).

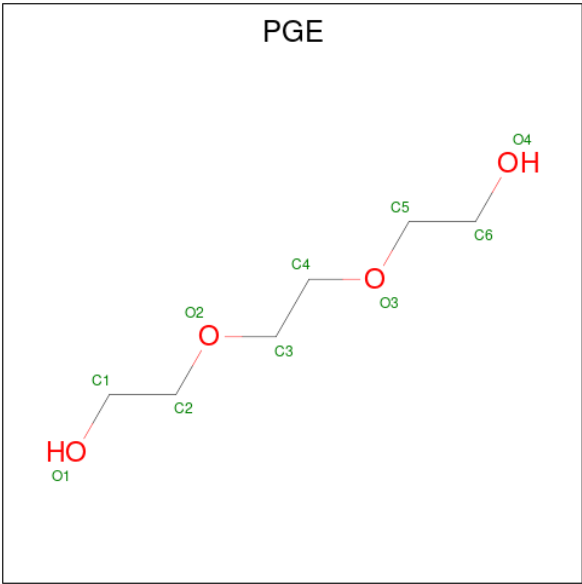
Mol	Chain	Residues	Atoms		ZeroOcc	AltConf
4	A	1	Total	Ca	0	0
			1	1		
4	B	1	Total	Ca	0	0
			1	1		

- Molecule 5 is HEME C (CCD ID: HEC) (formula: C₃₄H₃₄FeN₄O₄).



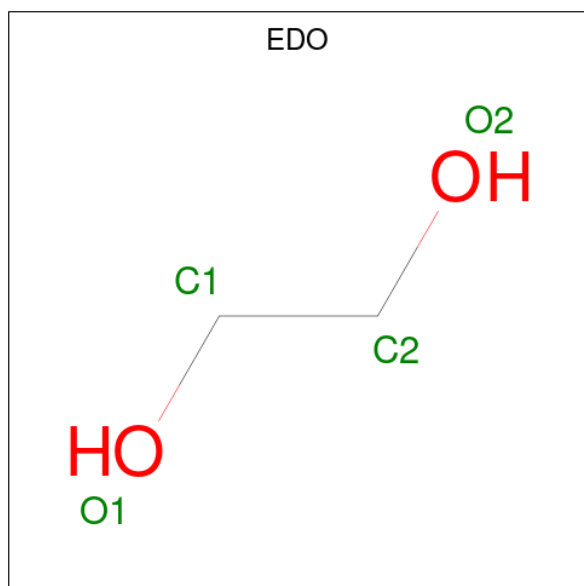
Mol	Chain	Residues	Atoms					ZeroOcc	AltConf
5	A	1	Total 43	C 34	Fe 1	N 4	O 4	0	0
5	A	1	Total 43	C 34	Fe 1	N 4	O 4	0	0
5	B	1	Total 43	C 34	Fe 1	N 4	O 4	0	0
5	B	1	Total 43	C 34	Fe 1	N 4	O 4	0	0

- Molecule 6 is TRIETHYLENE GLYCOL (CCD ID: PGE) (formula: C₆H₁₄O₄).



Mol	Chain	Residues	Atoms			ZeroOcc	AltConf
6	A	1	Total	C	O	0	0
			10	6	4		

- Molecule 7 is 1,2-ETHANEDIOL (CCD ID: EDO) (formula: $C_2H_6O_2$).

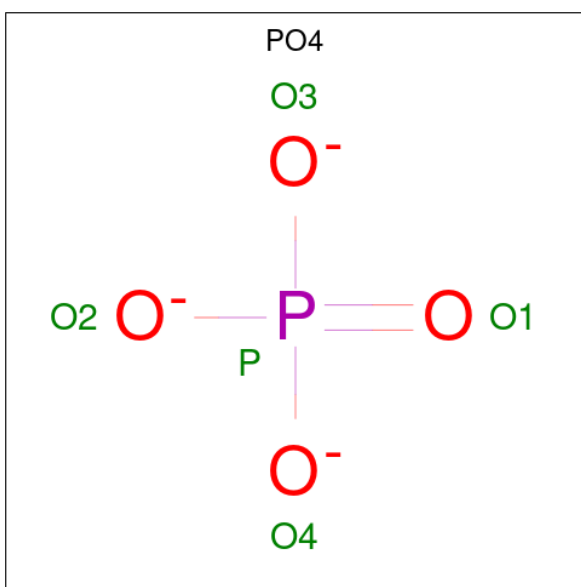


Mol	Chain	Residues	Atoms			ZeroOcc	AltConf
7	A	1	Total	C	O	0	0
			4	2	2		
7	B	1	Total	C	O	0	0
			4	2	2		

- Molecule 8 is SODIUM ION (CCD ID: NA) (formula: Na).

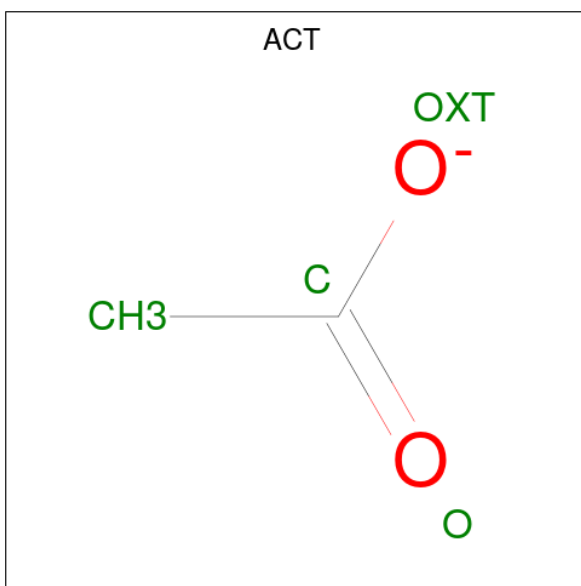
Mol	Chain	Residues	Atoms		ZeroOcc	AltConf
8	A	1	Total	Na	0	0
			1	1		
8	B	2	Total	Na	0	0
			2	2		

- Molecule 9 is PHOSPHATE ION (CCD ID: PO4) (formula: O_4P).



Mol	Chain	Residues	Atoms			ZeroOcc	AltConf
9	B	1	Total	O	P	0	0
			5	4	1		

- Molecule 10 is ACETATE ION (CCD ID: ACT) (formula: $C_2H_3O_2$).



Mol	Chain	Residues	Atoms			ZeroOcc	AltConf
10	D	1	Total	C	O	0	0
			4	2	2		
10	F	1	Total	C	O	0	0
			4	2	2		

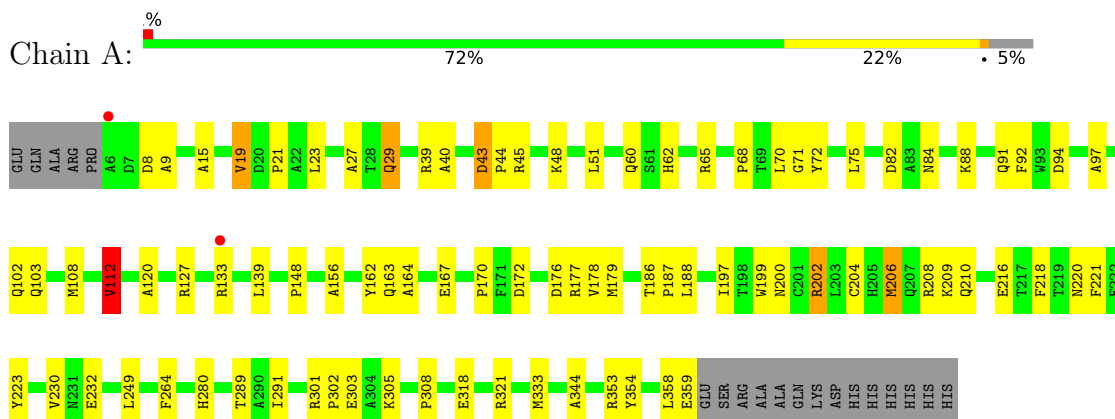
- Molecule 11 is water.

Mol	Chain	Residues	Atoms		ZeroOcc	AltConf
11	A	179	Total 181	O 181	0	2
11	B	258	Total 260	O 260	0	2
11	C	61	Total 61	O 61	0	0
11	D	184	Total 184	O 184	0	0
11	E	87	Total 87	O 87	0	0
11	F	293	Total 294	O 294	0	1

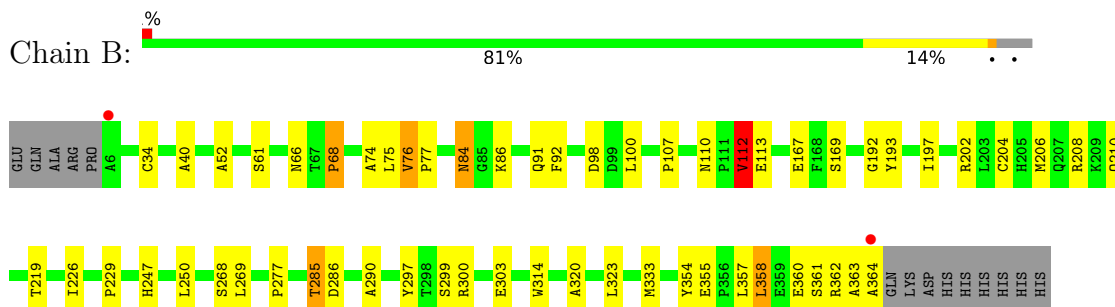
3 Residue-property plots [i](#)

These plots are drawn for all protein, RNA, DNA and oligosaccharide chains in the entry. The first graphic for a chain summarises the proportions of the various outlier classes displayed in the second graphic. The second graphic shows the sequence view annotated by issues in geometry and electron density. Residues are color-coded according to the number of geometric quality criteria for which they contain at least one outlier: green = 0, yellow = 1, orange = 2 and red = 3 or more. A red dot above a residue indicates a poor fit to the electron density ($RSRZ > 2$). Stretches of 2 or more consecutive residues without any outlier are shown as a green connector. Residues present in the sample, but not in the model, are shown in grey.

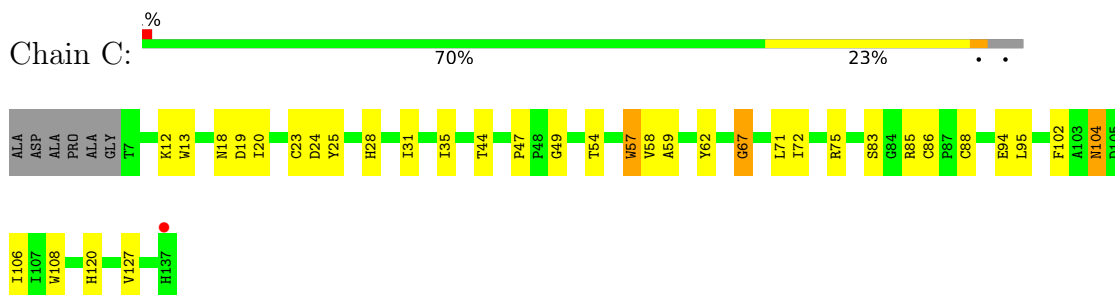
- Molecule 1: Methylamine utilization protein MauG



- Molecule 1: Methylamine utilization protein MauG

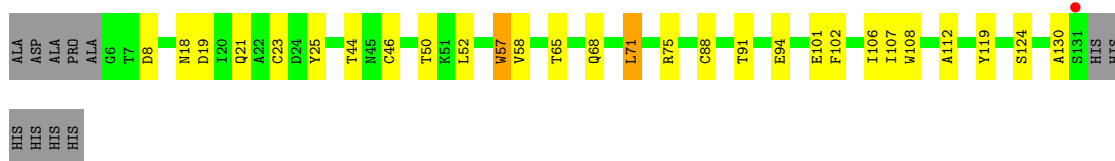


- Molecule 2: Methylamine dehydrogenase light chain



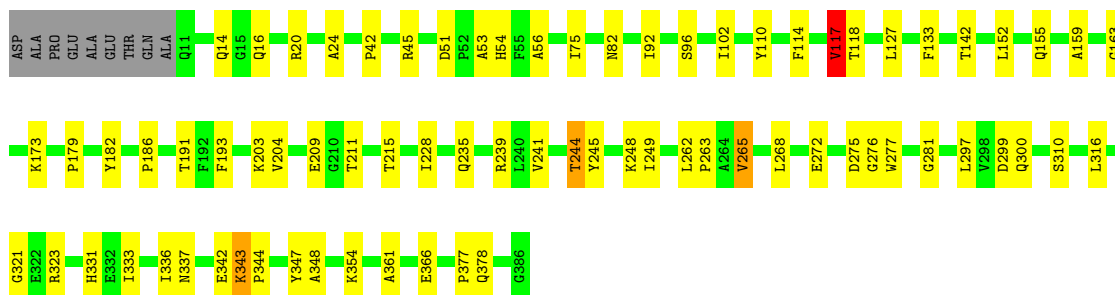
- Molecule 2: Methylamine dehydrogenase light chain





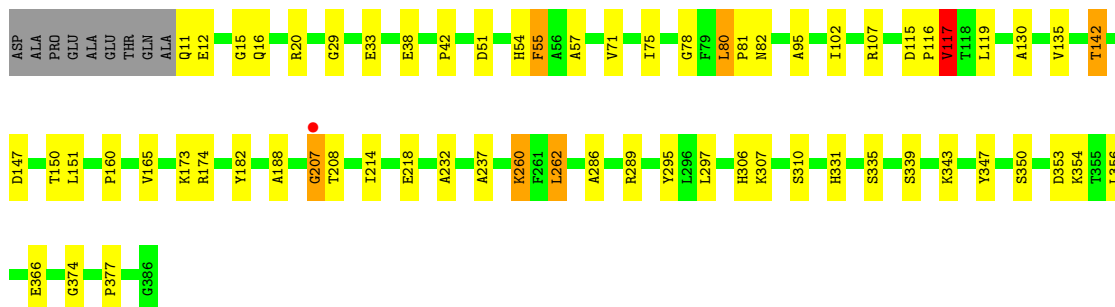
• Molecule 3: Methylamine dehydrogenase heavy chain

Chain D: 78% 18% ..



• Molecule 3: Methylamine dehydrogenase heavy chain

Chain F: 81% 15% ..



4 Data and refinement statistics

Property	Value	Source
Space group	P 1	Depositor
Cell constants a, b, c, α , β , γ	55.53Å 83.52Å 107.78Å 109.92° 91.52° 105.78°	Depositor
Resolution (Å)	43.46 – 2.14 43.46 – 2.14	Depositor EDS
% Data completeness (in resolution range)	97.4 (43.46-2.14) 97.4 (43.46-2.14)	Depositor EDS
R_{merge}	0.10	Depositor
R_{sym}	(Not available)	Depositor
$\langle I/\sigma(I) \rangle$ ¹	2.30 (at 2.14Å)	Xtriage
Refinement program	REFMAC 5.5.0109	Depositor
R, R_{free}	0.163 , 0.227 0.172 , 0.235	Depositor DCC
R_{free} test set	4829 reflections (5.04%)	wwPDB-VP
Wilson B-factor (Å ²)	32.0	Xtriage
Anisotropy	0.043	Xtriage
Bulk solvent k_{sol} (e/Å ³), B_{sol} (Å ²)	0.32 , 36.6	EDS
L-test for twinning ²	$\langle L \rangle = 0.50$, $\langle L^2 \rangle = 0.33$	Xtriage
Estimated twinning fraction	No twinning to report.	Xtriage
F_o, F_c correlation	0.96	EDS
Total number of atoms	14775	wwPDB-VP
Average B, all atoms (Å ²)	36.0	wwPDB-VP

Xtriage's analysis on translational NCS is as follows: *The largest off-origin peak in the Patterson function is 4.42% of the height of the origin peak. No significant pseudotranslation is detected.*

¹Intensities estimated from amplitudes.

²Theoretical values of $\langle |L| \rangle$, $\langle L^2 \rangle$ for acentric reflections are 0.5, 0.333 respectively for untwinned datasets, and 0.375, 0.2 for perfectly twinned datasets.

5 Model quality [i](#)

5.1 Standard geometry [i](#)

Bond lengths and bond angles in the following residue types are not validated in this section: CA, ACT, PGE, PO4, HEC, NA, EDO, 0AF

The Z score for a bond length (or angle) is the number of standard deviations the observed value is removed from the expected value. A bond length (or angle) with $|Z| > 5$ is considered an outlier worth inspection. RMSZ is the root-mean-square of all Z scores of the bond lengths (or angles).

Mol	Chain	Bond lengths		Bond angles	
		RMSZ	$\# Z > 5$	RMSZ	$\# Z > 5$
1	A	1.06	3/2880 (0.1%)	1.12	7/3902 (0.2%)
1	B	1.26	6/2845 (0.2%)	1.21	6/3859 (0.2%)
2	C	1.17	1/1035 (0.1%)	1.18	5/1413 (0.4%)
2	E	1.25	1/988 (0.1%)	1.21	3/1348 (0.2%)
3	D	1.08	3/3040 (0.1%)	1.14	9/4142 (0.2%)
3	F	1.27	6/3037 (0.2%)	1.19	10/4136 (0.2%)
All	All	1.18	20/13825 (0.1%)	1.17	40/18800 (0.2%)

The worst 5 of 20 bond length outliers are listed below:

Mol	Chain	Res	Type	Atoms	Z	Observed(Å)	Ideal(Å)
3	F	80	LEU	CA-C	-6.73	1.49	1.53
3	F	117	VAL	C-O	-6.67	1.17	1.23
3	D	378	GLN	CA-C	-6.48	1.45	1.52
1	B	68	PRO	CA-C	6.08	1.60	1.52
3	F	207	GLY	C-O	5.88	1.30	1.23

The worst 5 of 40 bond angle outliers are listed below:

Mol	Chain	Res	Type	Atoms	Z	Observed(°)	Ideal(°)
3	D	244	THR	N-CA-C	-7.60	98.75	109.69
3	F	262	LEU	CA-C-N	-6.89	112.86	119.76
3	F	262	LEU	C-N-CA	-6.89	112.86	119.76
1	A	200	ASN	N-CA-C	6.79	120.66	112.38
3	D	337	ASN	N-CA-C	-6.56	98.63	107.88

There are no chirality outliers.

There are no planarity outliers.

5.2 Too-close contacts ⓘ

In the following table, the Non-H and H(model) columns list the number of non-hydrogen atoms and hydrogen atoms in the chain respectively. The H(added) column lists the number of hydrogen atoms added and optimized by MolProbity. The Clashes column lists the number of clashes within the asymmetric unit, whereas Symm-Clashes lists symmetry-related clashes.

Mol	Chain	Non-H	H(model)	H(added)	Clashes	Symm-Clashes
1	A	2813	0	2695	70	0
1	B	2781	0	2655	35	0
2	C	1017	0	906	32	0
2	E	973	0	876	17	0
3	D	2959	0	2831	45	0
3	F	2957	0	2841	35	0
4	A	1	0	0	0	0
4	B	1	0	0	0	0
5	A	86	0	61	5	0
5	B	86	0	62	9	0
6	A	10	0	14	1	0
7	A	4	0	6	0	0
7	B	4	0	6	0	0
8	A	1	0	0	0	0
8	B	2	0	0	0	0
9	B	5	0	0	0	0
10	D	4	0	3	0	0
10	F	4	0	3	0	0
11	A	181	0	0	6	0
11	B	260	0	0	3	0
11	C	61	0	0	2	0
11	D	184	0	0	8	0
11	E	87	0	0	1	0
11	F	294	0	0	2	0
All	All	14775	0	12959	214	0

The all-atom clashscore is defined as the number of clashes found per 1000 atoms (including hydrogen atoms). The all-atom clashscore for this structure is 8.

The worst 5 of 214 close contacts within the same asymmetric unit are listed below, sorted by their clash magnitude.

Atom-1	Atom-2	Interatomic distance (Å)	Clash overlap (Å)
1:B:34:CYS:SG	5:B:402:HEC:HAC	1.71	1.23
1:A:204:CYS:SG	5:A:403:HEC:HAC	1.81	1.16
1:A:133[B]:ARG:HB3	1:A:133[B]:ARG:NH1	1.64	1.12

Continued on next page...

Continued from previous page...

Atom-1	Atom-2	Interatomic distance (Å)	Clash overlap (Å)
1:B:204:CYS:SG	5:B:403:HEC:HAC	1.90	1.07
1:A:202[A]:ARG:HH22	2:C:127:VAL:HG11	1.31	0.96

There are no symmetry-related clashes.

5.3 Torsion angles [i](#)

5.3.1 Protein backbone [i](#)

In the following table, the Percentiles column shows the percent Ramachandran outliers of the chain as a percentile score with respect to all X-ray entries followed by that with respect to entries of similar resolution.

The Analysed column shows the number of residues for which the backbone conformation was analysed, and the total number of residues.

Mol	Chain	Analysed	Favoured	Allowed	Outliers	Percentiles	
1	A	360/373 (96%)	342 (95%)	18 (5%)	0	100	100
1	B	358/373 (96%)	344 (96%)	13 (4%)	1 (0%)	36	33
2	C	129/137 (94%)	123 (95%)	5 (4%)	1 (1%)	16	9
2	E	126/137 (92%)	123 (98%)	3 (2%)	0	100	100
3	D	379/385 (98%)	360 (95%)	16 (4%)	3 (1%)	16	9
3	F	378/385 (98%)	363 (96%)	13 (3%)	2 (0%)	24	19
All	All	1730/1790 (97%)	1655 (96%)	68 (4%)	7 (0%)	30	26

5 of 7 Ramachandran outliers are listed below:

Mol	Chain	Res	Type
1	B	362	ARG
3	D	102[A]	ILE
3	D	102[B]	ILE
3	F	55	PHE
2	C	67	GLY

5.3.2 Protein sidechains [i](#)

In the following table, the Percentiles column shows the percent sidechain outliers of the chain as a percentile score with respect to all X-ray entries followed by that with respect to entries of similar

resolution.

The Analysed column shows the number of residues for which the sidechain conformation was analysed, and the total number of residues.

Mol	Chain	Analysed	Rotameric	Outliers	Percentiles	
1	A	284/292 (97%)	271 (95%)	13 (5%)	24	20
1	B	280/292 (96%)	267 (95%)	13 (5%)	24	20
2	C	111/112 (99%)	110 (99%)	1 (1%)	70	77
2	E	107/112 (96%)	101 (94%)	6 (6%)	19	14
3	D	309/310 (100%)	300 (97%)	9 (3%)	37	38
3	F	308/310 (99%)	301 (98%)	7 (2%)	44	47
All	All	1399/1428 (98%)	1350 (96%)	49 (4%)	32	31

5 of 49 residues with a non-rotameric sidechain are listed below:

Mol	Chain	Res	Type
3	D	117	VAL
3	D	354	LYS
3	D	127	LEU
3	D	215	THR
2	E	65	THR

Sometimes sidechains can be flipped to improve hydrogen bonding and reduce clashes. 5 of 21 such sidechains are listed below:

Mol	Chain	Res	Type
3	D	14	GLN
3	F	30	GLN
3	F	235	GLN
3	F	50	ASN
2	E	68	GLN

5.3.3 RNA ⓘ

There are no RNA molecules in this entry.

5.4 Non-standard residues in protein, DNA, RNA chains ⓘ

2 non-standard protein/DNA/RNA residues are modelled in this entry.

In the following table, the Counts columns list the number of bonds (or angles) for which Mogul

statistics could be retrieved, the number of bonds (or angles) that are observed in the model and the number of bonds (or angles) that are defined in the Chemical Component Dictionary. The Link column lists molecule types, if any, to which the group is linked. The Z score for a bond length (or angle) is the number of standard deviations the observed value is removed from the expected value. A bond length (or angle) with $|Z| > 2$ is considered an outlier worth inspection. RMSZ is the root-mean-square of all Z scores of the bond lengths (or angles).

Mol	Type	Chain	Res	Link	Bond lengths			Bond angles		
					Counts	RMSZ	# $ Z > 2$	Counts	RMSZ	# $ Z > 2$
2	0AF	C	57	2	15,16,17	1.39	2 (13%)	14,22,24	1.54	2 (14%)
2	0AF	E	57	2	15,16,17	1.21	1 (6%)	14,22,24	1.04	0

In the following table, the Chirals column lists the number of chiral outliers, the number of chiral centers analysed, the number of these observed in the model and the number defined in the Chemical Component Dictionary. Similar counts are reported in the Torsion and Rings columns. '-' means no outliers of that kind were identified.

Mol	Type	Chain	Res	Link	Chirals	Torsions	Rings
2	0AF	C	57	2	-	1/5/6/8	0/2/2/2
2	0AF	E	57	2	-	1/5/6/8	0/2/2/2

All (3) bond length outliers are listed below:

Mol	Chain	Res	Type	Atoms	Z	Observed(Å)	Ideal(Å)
2	C	57	0AF	CD2-CE2	-3.76	1.36	1.41
2	E	57	0AF	CD2-CE2	-2.50	1.38	1.41
2	C	57	0AF	CE2-NE1	-2.22	1.34	1.37

All (2) bond angle outliers are listed below:

Mol	Chain	Res	Type	Atoms	Z	Observed(°)	Ideal(°)
2	C	57	0AF	CE2-NE1-CD1	3.40	111.86	108.93
2	C	57	0AF	CG-CD1-NE1	-3.28	106.70	110.31

There are no chirality outliers.

All (2) torsion outliers are listed below:

Mol	Chain	Res	Type	Atoms
2	E	57	0AF	C-CA-CB-CG
2	C	57	0AF	C-CA-CB-CG

There are no ring outliers.

2 monomers are involved in 7 short contacts:

Mol	Chain	Res	Type	Clashes	Symm-Clashes
2	C	57	0AF	5	0
2	E	57	0AF	2	0

5.5 Carbohydrates [i](#)

There are no oligosaccharides in this entry.

5.6 Ligand geometry [i](#)

Of 15 ligands modelled in this entry, 5 are monoatomic - leaving 10 for Mogul analysis.

In the following table, the Counts columns list the number of bonds (or angles) for which Mogul statistics could be retrieved, the number of bonds (or angles) that are observed in the model and the number of bonds (or angles) that are defined in the Chemical Component Dictionary. The Link column lists molecule types, if any, to which the group is linked. The Z score for a bond length (or angle) is the number of standard deviations the observed value is removed from the expected value. A bond length (or angle) with $|Z| > 2$ is considered an outlier worth inspection. RMSZ is the root-mean-square of all Z scores of the bond lengths (or angles).

Mol	Type	Chain	Res	Link	Bond lengths			Bond angles		
					Counts	RMSZ	$\# Z > 2$	Counts	RMSZ	$\# Z > 2$
10	ACT	D	401	-	3,3,3	0.83	0	3,3,3	1.04	0
5	HEC	A	403	1	46,50,50	2.71	24 (52%)	58,82,82	2.40	19 (32%)
5	HEC	B	403	1	46,50,50	2.54	19 (41%)	58,82,82	2.61	19 (32%)
7	EDO	A	405	-	3,3,3	0.44	0	2,2,2	0.42	0
9	PO4	B	404	-	4,4,4	0.76	0	6,6,6	0.75	0
6	PGE	A	404	-	9,9,9	0.64	0	8,8,8	0.46	0
7	EDO	B	405	-	3,3,3	0.44	0	2,2,2	0.19	0
5	HEC	A	402	1,11	46,50,50	2.66	22 (47%)	58,82,82	2.37	20 (34%)
5	HEC	B	402	1,11	46,50,50	2.62	20 (43%)	58,82,82	2.42	19 (32%)
10	ACT	F	401	-	3,3,3	1.00	0	3,3,3	1.44	0

In the following table, the Chirals column lists the number of chiral outliers, the number of chiral centers analysed, the number of these observed in the model and the number defined in the Chemical Component Dictionary. Similar counts are reported in the Torsion and Rings columns. '-' means no outliers of that kind were identified.

Mol	Type	Chain	Res	Link	Chirals	Torsions	Rings
5	HEC	A	403	1	-	6/14/54/54	-
5	HEC	B	403	1	-	6/14/54/54	-
7	EDO	A	405	-	-	1/1/1/1	-

Continued on next page...

Continued from previous page...

Mol	Type	Chain	Res	Link	Chirals	Torsions	Rings
6	PGE	A	404	-	-	3/7/7/7	-
7	EDO	B	405	-	-	1/1/1/1	-
5	HEC	A	402	1,11	-	6/14/54/54	-
5	HEC	B	402	1,11	-	4/14/54/54	-

The worst 5 of 85 bond length outliers are listed below:

Mol	Chain	Res	Type	Atoms	Z	Observed(Å)	Ideal(Å)
5	B	402	HEC	CAC-C3C	5.84	1.54	1.35
5	A	402	HEC	CAC-C3C	5.69	1.53	1.35
5	A	403	HEC	CAB-C3B	5.51	1.52	1.35
5	B	403	HEC	C4D-ND	-5.23	1.29	1.39
5	A	403	HEC	CAC-C3C	5.19	1.51	1.35

The worst 5 of 77 bond angle outliers are listed below:

Mol	Chain	Res	Type	Atoms	Z	Observed(°)	Ideal(°)
5	B	403	HEC	CBB-CAB-C3B	-11.07	105.31	127.43
5	B	402	HEC	CBB-CAB-C3B	-10.88	105.68	127.43
5	A	403	HEC	CBB-CAB-C3B	-9.57	108.31	127.43
5	A	402	HEC	CBB-CAB-C3B	-7.98	111.49	127.43
5	B	403	HEC	CBC-CAC-C3C	-7.40	112.63	127.43

There are no chirality outliers.

5 of 27 torsion outliers are listed below:

Mol	Chain	Res	Type	Atoms
5	A	402	HEC	C2B-C3B-CAB-CBB
5	A	402	HEC	C4B-C3B-CAB-CBB
5	A	402	HEC	C2C-C3C-CAC-CBC
5	A	402	HEC	C4C-C3C-CAC-CBC
5	A	403	HEC	C2B-C3B-CAB-CBB

There are no ring outliers.

5 monomers are involved in 15 short contacts:

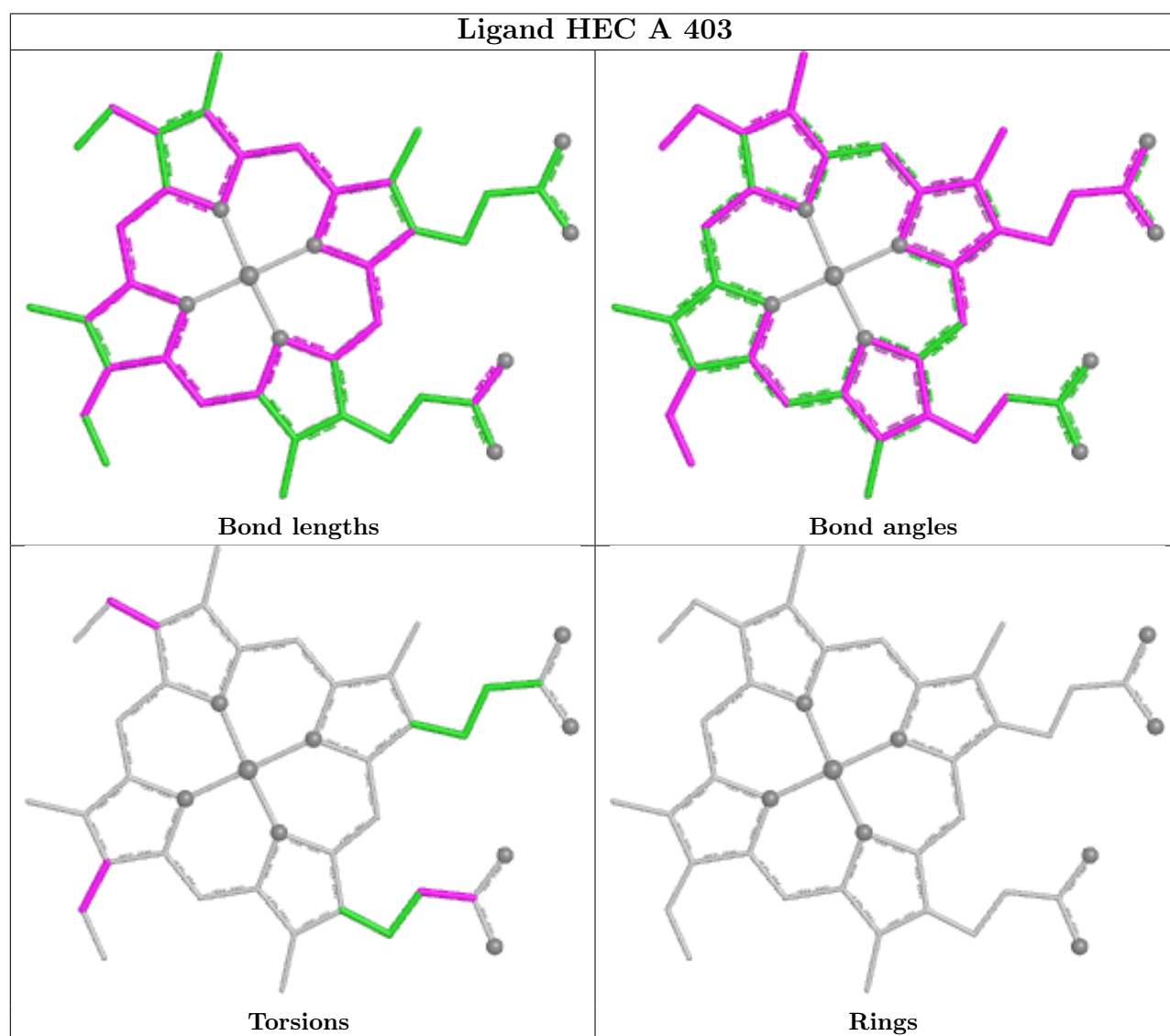
Mol	Chain	Res	Type	Clashes	Symm-Clashes
5	A	403	HEC	3	0
5	B	403	HEC	3	0
6	A	404	PGE	1	0

Continued on next page...

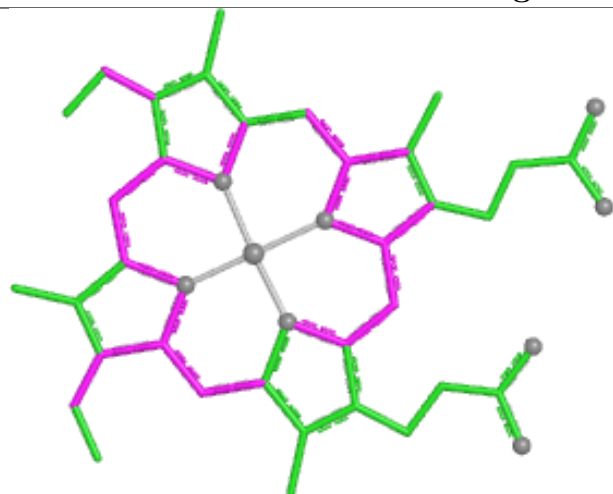
Continued from previous page...

Mol	Chain	Res	Type	Clashes	Symm-Clashes
5	A	402	HEC	2	0
5	B	402	HEC	6	0

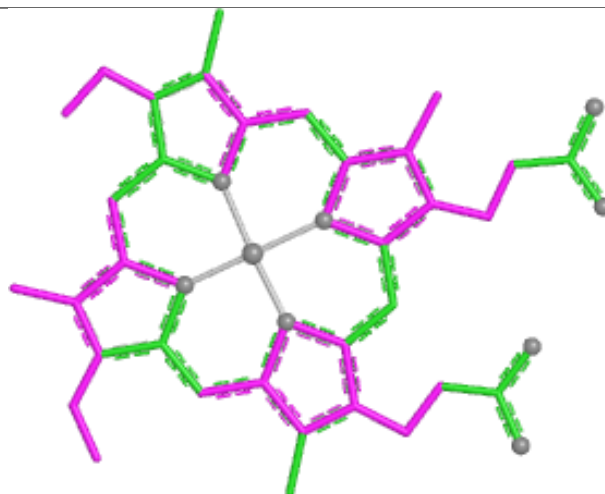
The following is a two-dimensional graphical depiction of Mogul quality analysis of bond lengths, bond angles, torsion angles, and ring geometry for all instances of the Ligand of Interest. In addition, ligands with molecular weight > 250 and outliers as shown on the validation Tables will also be included. For torsion angles, if less than 5% of the Mogul distribution of torsion angles is within 10 degrees of the torsion angle in question, then that torsion angle is considered an outlier. Any bond that is central to one or more torsion angles identified as an outlier by Mogul will be highlighted in the graph. For rings, the root-mean-square deviation (RMSD) between the ring in question and similar rings identified by Mogul is calculated over all ring torsion angles. If the average RMSD is greater than 60 degrees and the minimal RMSD between the ring in question and any Mogul-identified rings is also greater than 60 degrees, then that ring is considered an outlier. The outliers are highlighted in purple. The color gray indicates Mogul did not find sufficient equivalents in the CSD to analyse the geometry.



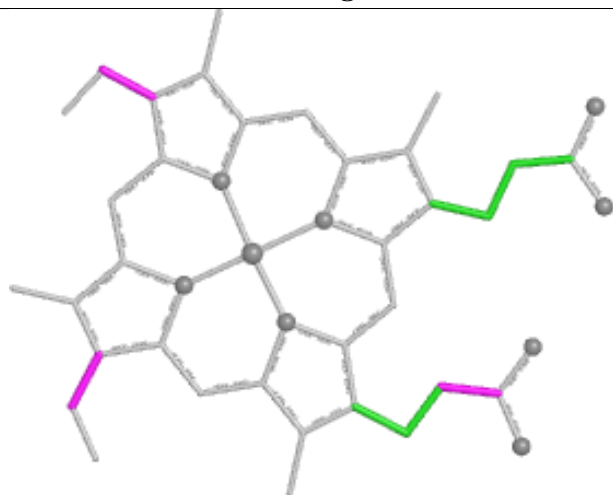
Ligand HEC B 403



Bond lengths



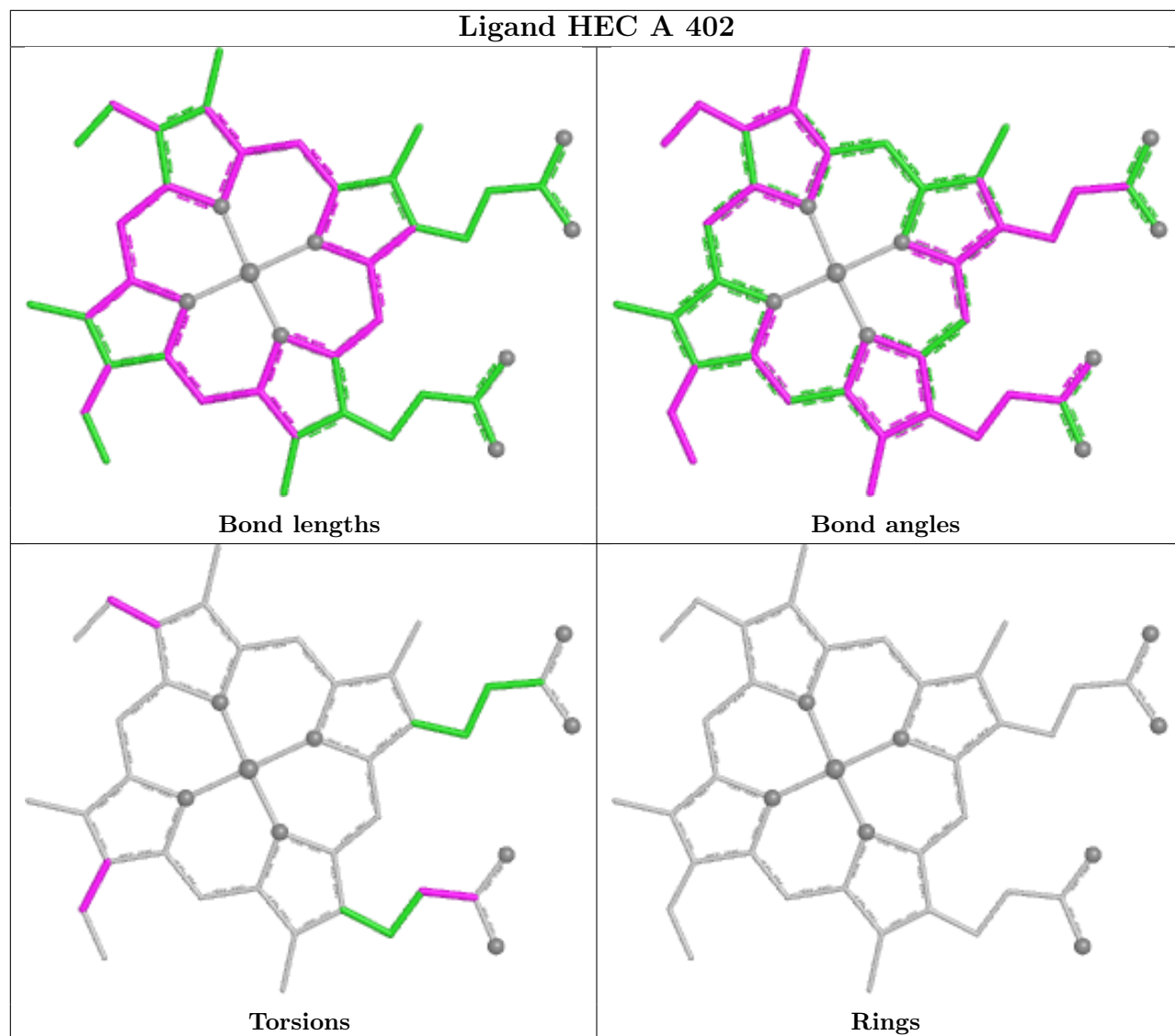
Bond angles

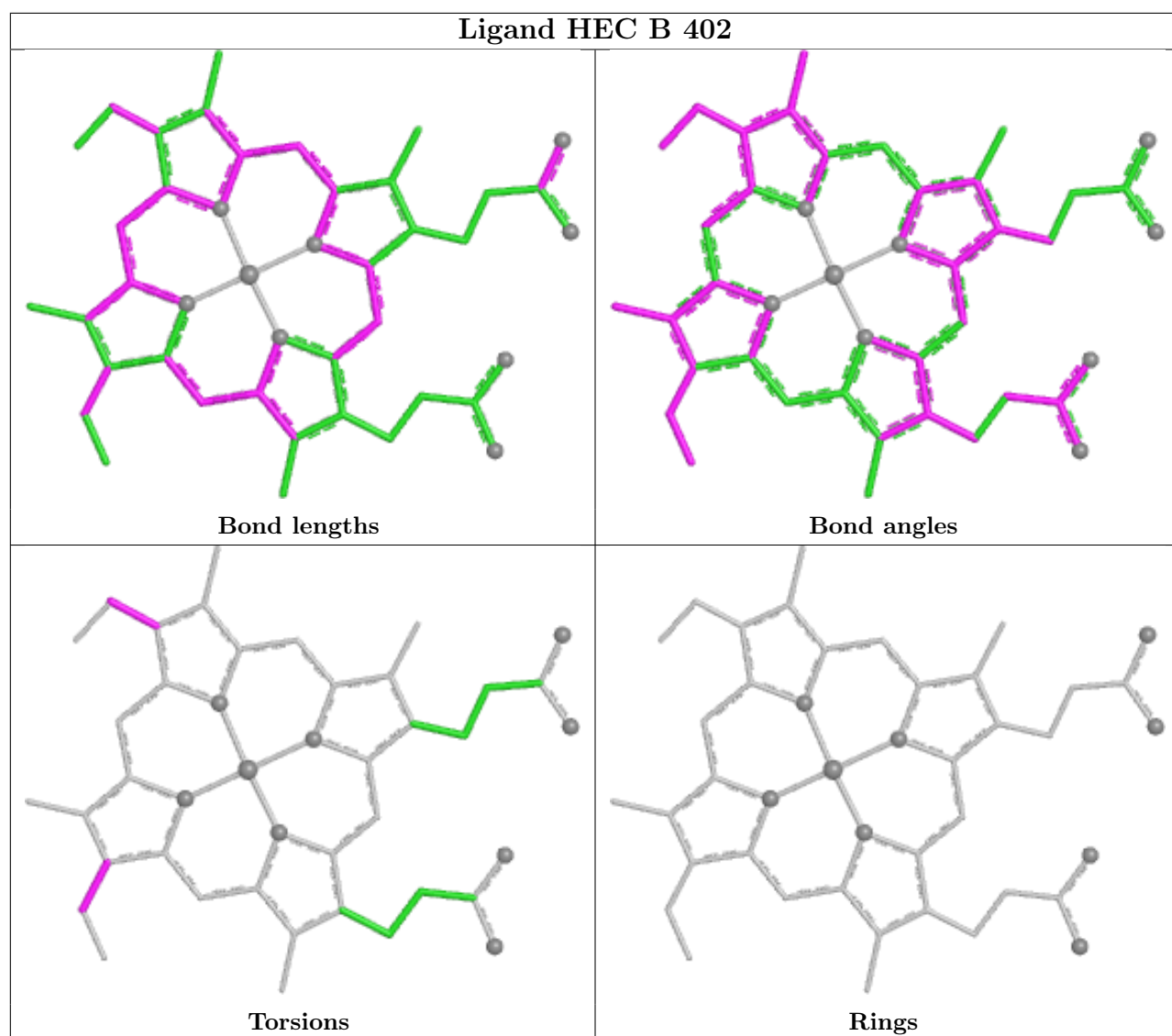


Torsions



Rings





5.7 Other polymers [i](#)

There are no such residues in this entry.

5.8 Polymer linkage issues [i](#)

There are no chain breaks in this entry.

6 Fit of model and data [i](#)

6.1 Protein, DNA and RNA chains [i](#)

In the following table, the column labelled ‘#RSRZ> 2’ contains the number (and percentage) of RSRZ outliers, followed by percent RSRZ outliers for the chain as percentile scores relative to all X-ray entries and entries of similar resolution. The OWAB column contains the minimum, median, 95th percentile and maximum values of the occupancy-weighted average B-factor per residue. The column labelled ‘Q< 0.9’ lists the number of (and percentage) of residues with an average occupancy less than 0.9.

Mol	Chain	Analysed	<RSRZ>	#RSRZ>2	OWAB(Å ²)	Q<0.9
1	A	354/373 (94%)	-0.19	2 (0%) 85 88	13, 39, 55, 71	7 (1%)
1	B	359/373 (96%)	-0.39	2 (0%) 85 88	18, 33, 51, 87	1 (0%)
2	C	130/137 (94%)	-0.14	1 (0%) 82 85	22, 36, 65, 82	1 (0%)
2	E	125/137 (91%)	-0.45	1 (0%) 82 85	14, 29, 42, 69	3 (2%)
3	D	376/385 (97%)	-0.17	0 100 100	13, 42, 67, 77	5 (1%)
3	F	376/385 (97%)	-0.51	1 (0%) 90 92	15, 30, 47, 61	4 (1%)
All	All	1720/1790 (96%)	-0.31	7 (0%) 88 91	13, 35, 58, 87	21 (1%)

The worst 5 of 7 RSRZ outliers are listed below:

Mol	Chain	Res	Type	RSRZ
2	E	131	SER	3.4
1	B	364	ALA	3.0
1	A	133[A]	ARG	2.7
2	C	137	HIS	2.6
1	A	6	ALA	2.6

6.2 Non-standard residues in protein, DNA, RNA chains [i](#)

In the following table, the Atoms column lists the number of modelled atoms in the group and the number defined in the chemical component dictionary. The B-factors column lists the minimum, median, 95th percentile and maximum values of B factors of atoms in the group. The column labelled ‘Q< 0.9’ lists the number of atoms with occupancy less than 0.9.

Mol	Type	Chain	Res	Atoms	RSCC	RSR	B-factors(Å ²)	Q<0.9
2	0AF	C	57	15/16	0.90	0.10	39,43,47,49	0
2	0AF	E	57	15/16	0.94	0.07	31,34,38,40	0

6.3 Carbohydrates

There are no oligosaccharides in this entry.

6.4 Ligands

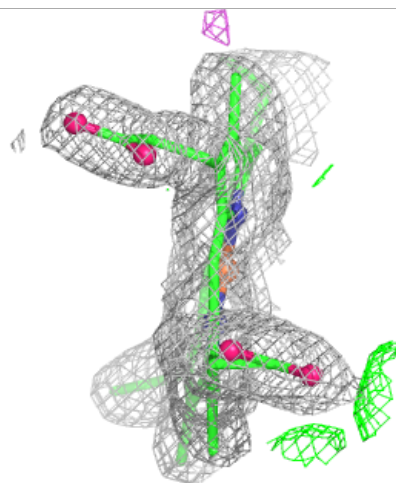
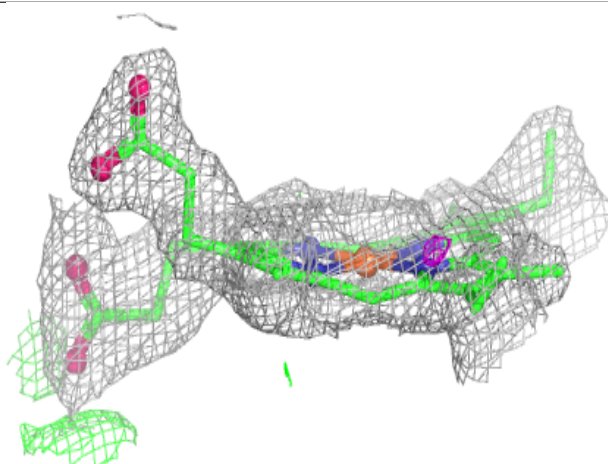
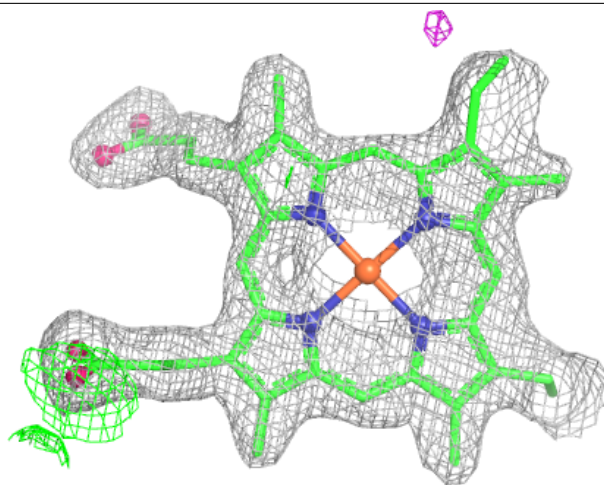
In the following table, the Atoms column lists the number of modelled atoms in the group and the number defined in the chemical component dictionary. The B-factors column lists the minimum, median, 95th percentile and maximum values of B factors of atoms in the group. The column labelled 'Q< 0.9' lists the number of atoms with occupancy less than 0.9.

Mol	Type	Chain	Res	Atoms	RSCC	RSR	B-factors(\AA^2)	Q<0.9
6	PGE	A	404	10/10	0.73	0.17	78,86,90,90	0
9	PO4	B	404	5/5	0.82	0.10	83,84,84,85	0
8	NA	A	406	1/1	0.84	0.10	61,61,61,61	0
7	EDO	A	405	4/4	0.86	0.10	59,59,60,60	0
10	ACT	D	401	4/4	0.92	0.12	46,47,47,48	0
7	EDO	B	405	4/4	0.94	0.10	44,46,47,48	0
10	ACT	F	401	4/4	0.95	0.12	42,44,46,46	0
8	NA	B	406	1/1	0.96	0.04	38,38,38,38	0
5	HEC	A	402	43/43	0.97	0.07	27,35,38,40	0
5	HEC	B	402	43/43	0.98	0.06	20,27,31,31	0
5	HEC	A	403	43/43	0.98	0.06	27,31,35,38	0
8	NA	B	407	1/1	0.98	0.03	42,42,42,42	0
4	CA	B	401	1/1	0.99	0.03	26,26,26,26	0
4	CA	A	401	1/1	0.99	0.03	33,33,33,33	0
5	HEC	B	403	43/43	0.99	0.05	16,22,26,29	0

The following is a graphical depiction of the model fit to experimental electron density of all instances of the Ligand of Interest. In addition, ligands with molecular weight > 250 and outliers as shown on the geometry validation Tables will also be included. Each fit is shown from different orientation to approximate a three-dimensional view.

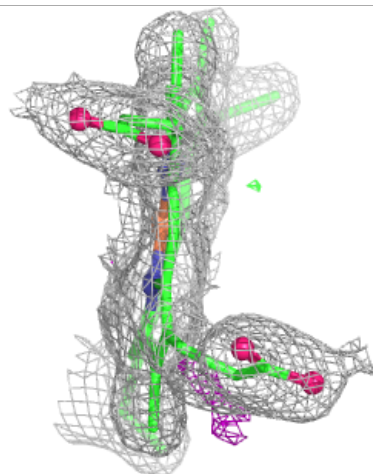
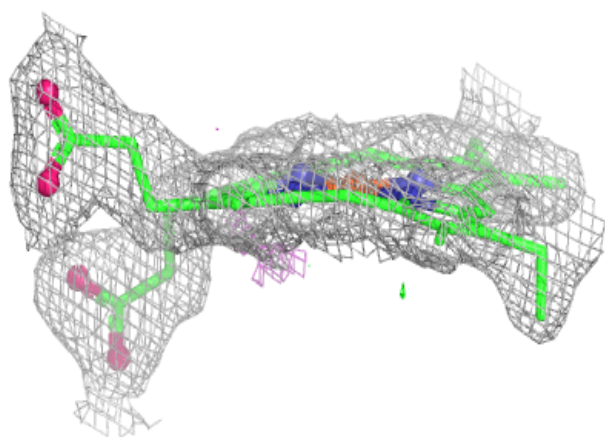
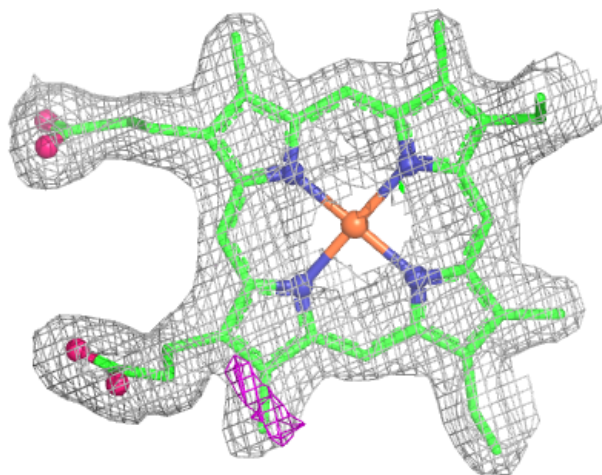
Electron density around HEC A 402:

$2mF_o-DF_c$ (at 0.7 rmsd) in gray
 mF_o-DF_c (at 3 rmsd) in purple (negative)
and green (positive)



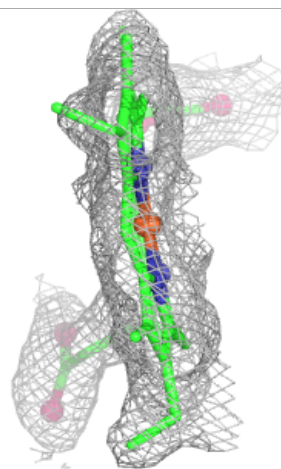
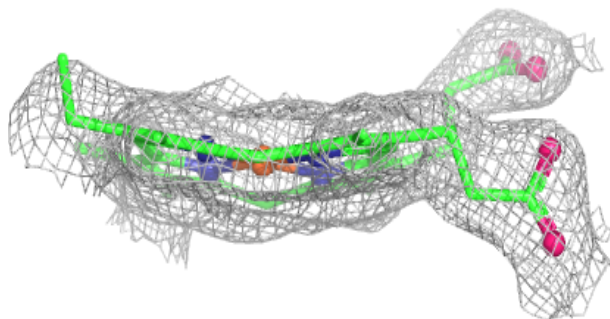
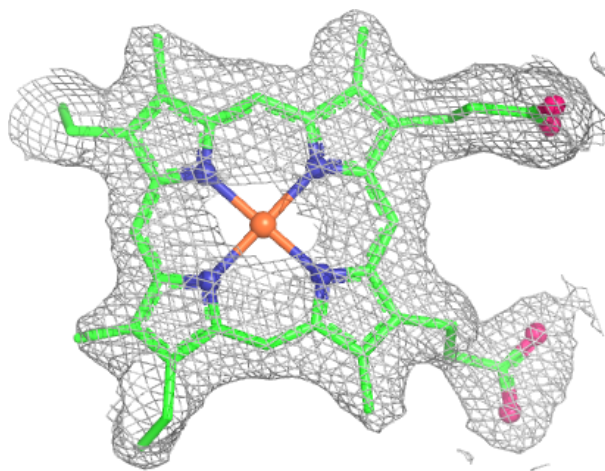
Electron density around HEC B 402:

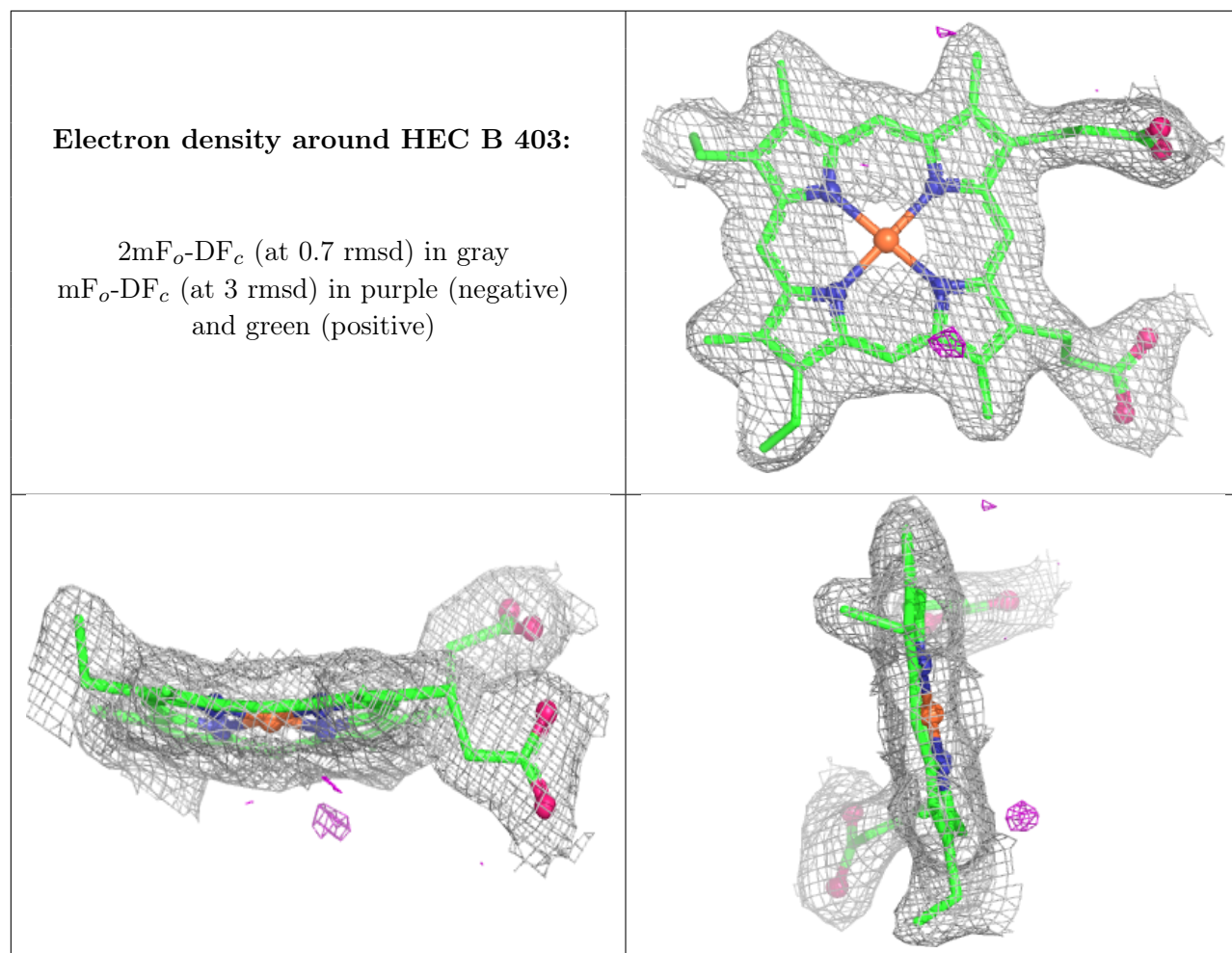
$2mF_o-DF_c$ (at 0.7 rmsd) in gray
 mF_o-DF_c (at 3 rmsd) in purple (negative)
and green (positive)



Electron density around HEC A 403:

$2mF_o-DF_c$ (at 0.7 rmsd) in gray
 mF_o-DF_c (at 3 rmsd) in purple (negative)
and green (positive)





6.5 Other polymers [i](#)

There are no such residues in this entry.